



## CENTRAL COAST CHAPTER CALIFORNIA LAND SURVEYORS ASSOCIATION

### CHAPTER MEETING AGENDA

MEETING DATE: JANUARY 17, 2024  
MEETING TIME: 6PM  
MEETING LOCATION: THE SWITCH SLO

### **(GARCIA) CALL TO ORDER: 6:08PM**

Call for attendees to introduce themselves. 23 people in attendance.

### **APPROVAL OF MINUTES – NOV 15<sup>TH</sup>, 2023 MEETING, MINUTES**

**Motion by Kyle Huerth and seconded by John Sanders** to approve the Nov 15, 2023 meeting minutes posted in Parallax.

Call for Votes- Ayes 20, Nays 0. **Motion Passed.**

### **OFFICERS REPORTS**

#### **PRESIDENT'S REPORT** –LUZ GARCIA, PLS

- Excited to see what this year will bring for the chapter.

#### **VICE-PRESIDENT REPORT** – JEREMIAH HERMAN PLS

- No report

#### **SECRETARY/TREASURER REPORT** – TUCKER SANDERS, PLS

- As of January 17<sup>th</sup>, 2024 there is \$5,143.27 in the Bank.
- Chapter Annual Report has been sent to central office.

### **DIRECTORS REPORT**

DIRECTORS–MARCO CASTANEDA, PLS,  
JOE MORRIS, PLS

- Next Board of Directors meeting is Feb 3rd, 2024.

### **INSTALLATION OF NEW OFFICERS:**

**PRESIDENT** JEREMIAH HERMAN, PLS

**VICE-PRESIDENT** TUCKER SANDERS, PLS

**SECRETARY/TREASURER** MARCO CASTANEDA, PLS

### **2023 COMMITTEES' REPORTS**

#### **EXECUTIVE COMMITTEE– CHAIR: LUZ GARCIA, PLS**

- CHAPTER OF THE YEAR NOMINATION WAS SUBMITTED
- UPCOMING COMMITTEE CHAIRS WILL BE CONTACTED TO PROVIDE THEIR RESPECTIVE



## CENTRAL COAST CHAPTER CALIFORNIA LAND SURVEYORS ASSOCIATION

### COMMITTEE'S BUDGET FOR THE YEAR

- THE LEGALCY COMMITTEE HAS BEEN REMOVED FROM THE COMMITTEE THIS YEAR, A FINAL REPORT HAS BEEN ATTACHED
- RATIFY FOR CLSA TO SPONSOR 1 STUDENT TO THE UPCOMING CLSA CONFERENCE FOR \$350 PLUS \$150 FOR DOOR PRIZES.

**Motion** by Cristy Fry and **Seconded** by John Sanders to ratify the executive committee's decision to sponsor 1 student to the upcoming CLSA conference plus donation for door prizes.

Call for votes – Ayes 21, Nays 0 **MOTION PASSED**

### BYLAWS COMMITTEE – CHAIR: JEREMIAH HERMAN, PLS

No Report

### EDUCATION COMMITTEE – CHAIR: TOM MASTIN, PLS

- Scholarship selection, education committee was requested to submit recommendations to the CLSA Education Foundation for recipients of the Chapter's three scholarships. Central Coast Scholarship (\$500), Cliff Lewis Memorial Scholarship (\$750), Jeremy Redmon Memorial Scholarship (\$500). The committee was provided with basic information on the 65 applicants and provided copies of the applicant's submittals along with some of the instructor's recommendation matrix. The committee reviewed and voted on potential recipients for our scholarships.

### MEMBERSHIP COMMITTEE – CHAIR: TUCKER SANDERS, PLS

- 53 total members
  - 30 Corporate, 8 Associate, 9 Affiliate, 1 Student, 3 Life, 2 other.

### PROFESSIONAL PRACTICES COMMITTEE – CHAIR: LUZ GARCIA, PLS

- MET DECEMBER 1<sup>ST</sup> AND JANUARY 10<sup>TH</sup>- 3 ACTIVE CASES
- COMPLAINT 2022-05C- MONUMENT DESTRUCTION: THIS CASE WAS DROPPED DUE TO ABSENCE OF INFORMATION AFTER THE INVESTIGATION WAS FINALIZED.
- COMPLAINT 2023-02-. MONUMENT PERPETUATION- THE FIRST LETTER STATING THIS CASE WAS BROUGHT TO THE ATTENTION OF THE PPC WAS SENT.
- COMPLAINT 2023-03/2023-07 SAME RECIPIENT- PRE- AND POST-ROS, MONUMENT PERPETUATION- THEY ARE WORKING ON GETTING THESE MONUMENTS RESTORED.
- COMPLAINT 2023-04- 5 MONUMENTS WERE RESTORED, ROS FILED. CASE CLOSED.
- COMPLAINT 2023-05- 5 MONUMENTS DESTROYED, 7 MONUMENTS WERE RESTORED, WAITING FOR ROS TO GET FILED.
- PPC GUIDELINES TO BE RE-APPROVED BY THE CHAPTER. SEE COPY ATTACHED.



## CENTRAL COAST CHAPTER CALIFORNIA LAND SURVEYORS ASSOCIATION

**Motion** by Kyle Huerth and **seconded** by Tucker Sanders to approve the revision to the PPC Bylaws.

Call for votes – Ayes 21, Nays 0 **MOTION PASSED**

TRIG-STAR COMMITTEE – CHAIR: LUZ GARCIA

- WILL BEGIN TO REACH OUT TO SCHOOLS THIS MONTH THE GOAL IS TO GET AT LEAST 5.

LEGACY COMMITTEE – CHAIR: KYLE HUERTH, PLS

- FINAL REPORT ATTACHED

MONUMENT CONSERVATION COMMITTEE – CHAIR: ROBERT REESE, PLS

- REPORT ATTACHED

**Motion** by Robert Reese and **seconded** by Joe Morris to move that an account be added to the chapter's Treasurer Report for the following preliminary items and amounts. Monument Conservation Committee

Publications: \$100

Outreach activities: \$750

Motion by Robert Reese and seconded by Joe Morris.

Call for votes – Ayes 21, Nays 0 **MOTION PASSED**

NOMINATION COMMITTEE – CHAIR: ROBERT REESE, PLS

No Report

BBQ COMMITTEE – CHAIR: KEN FARGEN, PLS

- BBQ will be on August 24<sup>th</sup>, 2024.

### OLD BUSINESS

- NONE

### NEW BUSINESS

- Motion by Tucker Sanders and seconded by John Sanders to Vote to remove Luz Garcia from the CLSA Central Coast Chapter bank account and add Marco Castaneda.

Call for vote – Ayes 21, Nays 0 **Motion Passed**

**SPEAKER:**

KEVIN IROT-FATCO

### ADJOURNMENT

Meeting Adjourned at 7:42 P.M.



Kyle Huerth, PLS 9375  
PO Box 3087, Orcutt, CA 93457  
(805) 406-4215 kyle@orcuttssurvey.com

**January 17, 2024**

**RE: Central Coast Chapter CLSA Legacy Committee Report**

The Legacy Committee has been requesting any old documents or electronic files members have been keeping stashed away in their closets or old computers to compile into a central location.

After a few years the Legacy Committee is shutting down and will post all provided documents into the Central Coast Chapter's Google Docs drive along with the templates used by the Secretary/Treasurer to facilitate their duties.

The Legacy Committee Chair will work with the Editor of the Parallax newsletter to post these documents into the Google Docs drive for access by the ExCom, once posted in the drive a post will be made in the Parallax explaining how to access these files. After the files and instructions are posted the Legacy Committee will officially close.

Sincerely,

A handwritten signature in blue ink, appearing to read "KHE", is positioned above the typed name.

Kyle Huerth, PLS  
Legacy Committee Chair



## CENTRAL COAST CHAPTER CALIFORNIA LAND SURVEYORS ASSOCIATION

### *Monument Conservation Committee Report, 2024.01.17*

The Monument Conservation Committee (MCC) has been appointed by President Garcia.

#### **COMMITTEE MISSION STATEMENT**

*The mission of CLSA Central Coast Chapter's Monument Conservation Committee is:*

- 1) To foster a better understanding of the benefits of monument conservation*
- 2) To provide informational and educational materials to local public agencies, public utilities, the local construction industry, and the public regarding these benefits regarding monument identification and conservation*
- 3) To develop best practice measures for monument conservation by land surveyors and agencies*
- 4) To organize and provide opportunities for monument conservation outreach programs*

#### **MEMBERS**

The MCC currently has the following members.

Luz Garcia, PLS <i>ex officio</i>	Ian McClain, PLS	Joe Morris, PLS
Ed Reading, PLS	Robert Reese, PLS, 2023 chair	Mike Stanton, PLS
John Sanders, PLS		

This committee invites and is soliciting others interested in fulfilling the MCC purposes and goals. Contributions of members will include arranging material publications, event planning and organization, public agency contact and liaisons.

#### **PURPOSES AND GOALS**

The MCC purpose is to promote the conservation of survey monuments by:

- Developing and updating models for Plans, Specifications and Estimates (PS&E) to provide for inclusion of same in public and private construction plans,
- Creating and distributing information regarding monument conservation to the public and others,
- Engaging the public sector and public utilities in outreach and educational opportunities regarding monument conservation and PS&E inclusion in RFPs and RFQs.

#### **COMMITTEE ACTIONS**

The MCC met three times in 2023. At the last meeting, the committee:

- 1 Finalized the Cover Letter to be sent to various agencies (ATTACHED)
  - 2 Approved a draft Best Practices Flowchart for editing to accompany the Cover Letter (ATTACHED)
  - 3 Reviewed and edited the PS&E provisions for various types of Capital Improvement Projects
- The PS&E boiler plate and narratives will be reviewed in 2024.

As well, the Outreach Effort, the goal of the MCC, still has to be crafted and implemented in 2024. Thereafter, the present chair will step down. Thereafter, a chapter member with a strong interest in monument conservation is encouraged to assume the chair.

#### **MOTIONS FOR CONSIDERATION**

Moved to include in the Treasurer's report a place holder line item of

#### **BUDGET REPORT**

None at present.

MOTION: **MOVE that an account be added to the chapter's Treasurer Report for the following preliminary items and amounts.** *Monument Conservation Committee*

<i>Publications</i>	<i>\$100</i>
<i>Outreach activities</i>	<i>\$750</i>

Respectfully submitted,

Robert Reese, 2023 Chair

EC ExCom, Committee members, Parallax



Central Coast Chapter  
California Land Surveyors Association  
**Monument Conservation Committee**  
900 Los Osos Valley Road, Suite B  
Los Osos, CA 93402

To: Local Agency Engineering Departments, Building Departments,  
Contractors

Subject: **Informational Letter Re: Survey Monument Conservation**



**DO YOUR STANDARD SPECS OR SPECIAL PROVISIONS  
CONTAIN THE FOLLOWING?**

***“The contractor is responsible for the protection or proper resetting of all existing monuments and other survey markers. Any survey monuments destroyed by the contractor shall be replaced by a Professional Licensed Land Surveyor in accordance with the state land surveyor's act at the contractor's own expense.”***

**IF SO, PER BUSINESS AND PROFESSIONS CODE §8771(d) THIS IS  
NOT ALLOWED UNDER THE LAW!!**

**A CONTRACTOR IS NOT LICENSED TO ASSUME THIS RESPONSIBILITY!!**

**Survey “monuments”,** (that is, physical markers that denote rights of way, road centerlines, private property corners) are experiencing an attrition rate that is unsustainable. At the heart of the problem is misinformation, or worse, no information. We believe having a little knowledge can simplify the solution and can benefit everyone.

This informational letter is provided to help initiate a dialogue and offer specific, proper measures to safeguard these **survey monuments**. ***These markers do not “belong” to surveyors. They belong to the PUBLIC and to PRIVATE INDIVIDUALS, your customers.***

The Situation: Professional Land Surveyors in the public and private sectors are responsible for determining the location of property boundaries and rights-of-way. Physical evidence in the form of **survey monuments** is critical to this task. If these markers are lost, replacement survey work could extend in several directions, possibly miles, and could affect properties worth multi-million-dollar valuations.

☞ This makes replacement **AFTER** the fact (destruction) considerably more expensive than **BEFORE** destruction. This increases the costs to public agencies, contractors and/or the private property owners, not to mention possible conflicts and disputes due to compromised replacement positions!

The Solution: In the accompanying brochure **“SURVEY MONUMENT CONSERVATION: WHAT DOES IT MEAN TO YOU?”** we offer suggestions on what to do about conserving **survey monuments**, and the responsibilities under the law, the relevant codes, and a few pictures of actual survey monuments.

You are invited to review the information in our brochure and contact any of your local land surveyors for assistance. We will be happy to provide additional brochures for your use and distribution.

We look forward to assisting you with your monument conservation efforts.  
Sincerely,

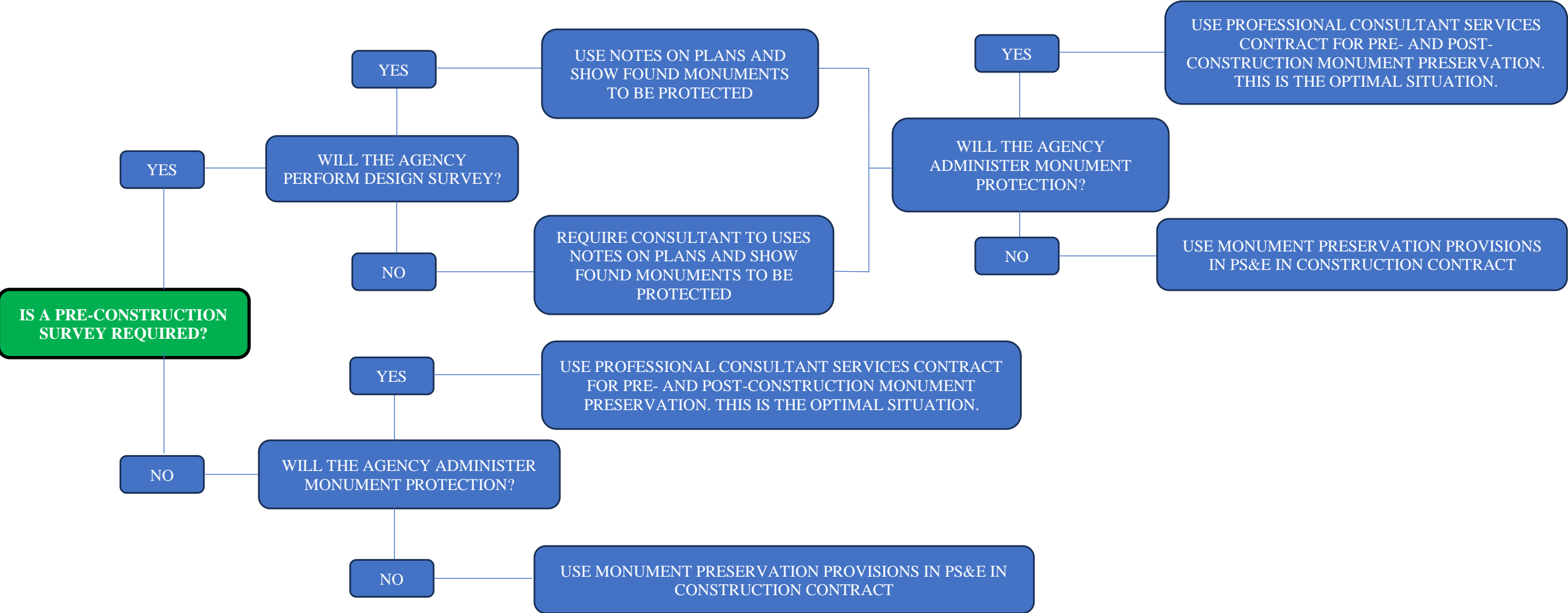
Robert J. Reese, PLS

2023 Chair Monument Conservation Committee, CLSA Central Coast Chapter

Enclosures: **“SURVEY MONUMENT PRESERVATION: WHAT DOES IT MEAN TO YOU?”**  
**“SURVEY MONUMENT PRESERVATION BEST PRACTICES”**



# MONUMENT PRESERVATION BEST PRACTICES FOR CONSTRUCTION PROJECTS





## Monument Conservation

### Excerpts from California Law

#### Business & Professions Code §8771

(b) When monuments exist that control the location of subdivisions...roads, streets or highways...the monuments shall be located and referenced by or under the direction of a licensed land surveyor or registered civil engineer prior to the time when any streets, highways, other rights-of-way, or easements are improved, constructed, reconstructed, maintained, resurfaced, or relocated, and a corner record or record of survey of the references shall be filed with the county surveyor....

...The government agency performing or permitting construction or maintenance work is responsible for ensuring that either the governmental agency or landowner performing the construction or maintenance work provides for monument perpetuation required by this section...

#### Business & Professions Code §8725

...It is unlawful for any person ...to set, reset, replace, or remove any survey monument on land in which he or she has no legal interest, unless he or she has been licensed or specifically exempted from licensing under this chapter.



CLSA

#### Penal Code §605

Every person who either:

1. Maliciously removes any monument erected for the purpose of designating any point in the boundary of any lot or tract of land, or a place where a subaqueous telegraph cable lies; or,
2. Maliciously defaces or alters the marks upon any such monument; or,
3. Maliciously cuts down or removes any tree upon which any such marks have been made for such purpose, with intent to destroy such marks.  
-- Is guilty of a misdemeanor.

#### Government Code §27581

All monuments located in public highways shall be placed with the top not less than 12 inches below the surface of the ground, but when not located in public highways, they shall be placed with the top six inches above the surface of the ground...

*Note: These excerpts from California law have been edited to provide relevant portions in a limited space. You must refer to the complete text of the statutes and laws for full meaning and context.*



an informational brochure of California Land Surveyors Association © 2016 CLSA



**CLSA**  
CALIFORNIA LAND SURVEYORS ASSOCIATION

[www.californiasurveyors.org](http://www.californiasurveyors.org)



## What are Survey Monuments?

The corners of parcels or lines of easements can only be visualized on the ground by setting markers, or survey monuments. A survey monument is a physical marker that locates a corner or line on the ground. They can be on a line or offset from a line, on, above or below the surface, noticeable or almost invisible. These markers can take many forms, some more durable than others:

- a chiseled cross in a sidewalk set 60 years ago
  - a nail and brass tag under 2" of pavement
  - iron pipes of any diameter driven into the ground, either buried well below the surface or visible at the surface
  - wood stakes or posts, with or without identifying tags
  - old nails or "X" scribed in concrete
  - rebar, with or without identifying caps
  - a scribed stone or post placed in or on the ground, sometimes with a rock mound around it
- ... the list goes on.

## Why are Survey Monuments Important?

Existing monuments are used to maintain the integrity and continuity of adjoining properties, neighborhoods, subdivisions, roads, highways, cities, counties, states, and even countries.

The land surveying community has observed an increase in the mortality rate of survey monuments set for right of way control, public, and private property boundaries. With their destruction, the potential for conflicts and uncertainty of boundaries arises.

## How Can a Land Surveyor Help?

You may be able to recognize a survey monument set at or above the surface of the ground. But your local Land Surveyor is experienced and qualified to research and properly identify what markers may still exist near your project – and to find and recover them without destruction!



## What are the Benefits of Monument Conservation?

- ✓ Protection of Rights - Survey monuments protect the rights of property owners, easement holders, and their adjoining.
- ✓ Keeping the Law - Malicious removal or destruction of survey monuments is against the law.
- ✓ Stability – Survey monuments provide stability and balance of interests in real property.
- ✓ Avoid Liability – You may be liable for destruction of monuments caused by your improvements.
- ✓ Cost Savings - It costs much less to preserve a monument than it does to replace it after it is destroyed.
- ✓ Tax Savings – Resetting road, property or easement monuments after a public improvement project adds significant costs which will ultimately be borne by the tax-paying public.
- ✓ Preserve Original Locations - Property lines and easements can be easily identified in their original location when monuments are preserved.
- ✓ Stay out of Court – Avoid possible civil actions based on unknown boundary locations when monuments are preserved.



## How to Avoid Monument Destruction & Penalties

Use the skills and expertise of your local Land Surveyor! He or she can provide the following services to conserve survey monuments before and after construction...

### Before Construction or Project

- ✓ **research** - research record information for existence of markers and benchmarks
- ✓ **locate & identify** – search for and find existing markers and benchmarks, whether visible or buried
- ✓ **reference** – set reference marks to original monuments that will remain throughout and after construction

### After Construction or Project

- ✓ **replacement** – set replacement markers in original position using reference marks if original monuments are disturbed or destroyed
- ✓ **document** – file proper documentation with the proper agency(ies) showing original and replacement monuments
- ✓ **preservation** – set protective posts or structures near monuments for future identification

Be sure to obtain copies of the Surveyor's documentation and/or take photos of monuments, whether original or replacement monuments.

**REMEMBER** – \$1 of prevention is worth \$10 "cure"  
- replacing a monument AFTER it is destroyed takes 10 times the cost to protect it BEFORE it is destroyed.

