



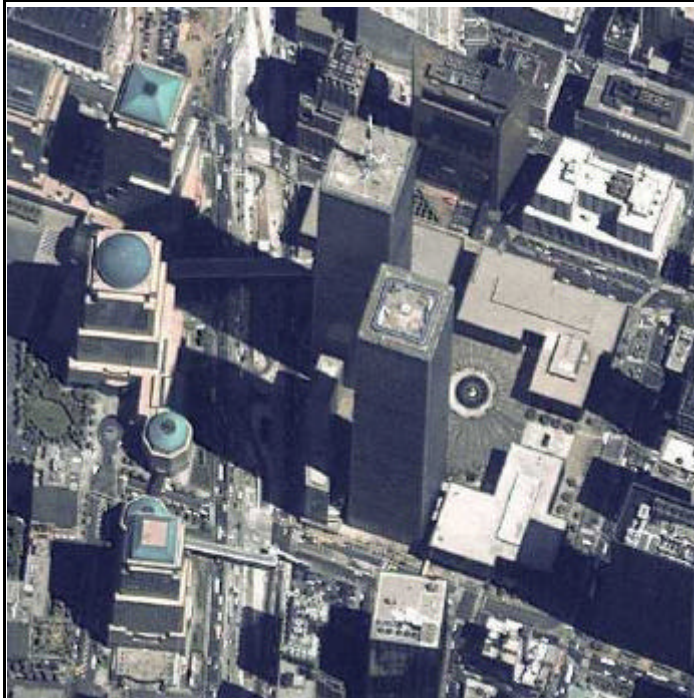
PARALLAX

Newsletter of the Central Coast Chapter of the California Land Surveyors Association

Volume 5, Issue 10

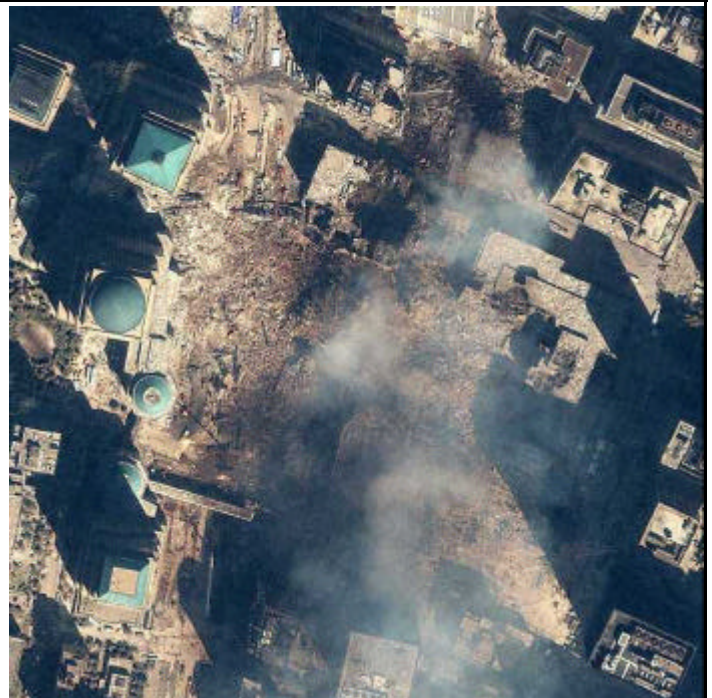
October 2001

September 11, 2001 - God Bless America



This one-meter resolution satellite image of Manhattan, New York was collected June 30, 2000 by Space Imaging's IKONOS satellite. The image, taken from the south, prominently features the 110-story World Trade Center twin towers. IKONOS travels 423 miles above the Earth's surface at a speed of 17,500 miles per hour.

Mandatory credit: "spaceimaging.com"



This one-meter resolution satellite image of Manhattan, New York was collected at 11:54 a.m. EDT on Sept. 15, 2001 by Space Imaging's IKONOS satellite. The image shows the remains of the 1,350-foot towers of the World Trade Center, and the debris and dust that has settled throughout the area. Also visible are the many emergency and rescue vehicles in the streets in the vicinity of the disaster. IKONOS is the world's first high-resolution commercial Earth imaging satellite. It travels 423 miles above the Earth's surface at a speed of 17,500 miles per hour. Mandatory credit: "spaceimaging."

Table of Contents

IKONOS	1
Chapter Meeting Minutes	3
2002 CLSA Conference.....	4

OCTOBER MEETING NOTICE

Date: Thursday, October 11, 2001 Location: F. McClintocks
 750 Mattie Road
 Shell Beach
 Time:..... 6:30pm.....no-host cocktails
 7:00pm.....business meeting
 7:15pm.....dinner
 8:00pm.....Program & Speaker
 Dinner: Beef / Chicken / Halibut
 Cost : \$25.00 includes tax & tip

Program:
 Mike Hart from Allen Instruments will be talking about new technology and Trimble's
 Virtual Reference Station?
 RSVP by Tuesday, October 9th to:
 Rochelle Vierra461-3360 or email Rochelle_Vierra@dot.ca.gov



Computer Generated Maps for Engineers,
Surveyors and Designers

AERIAL MAPPING SERVICE

4211 Broad St. Suite B / San Luis Obispo, CA 93401
(805) 543-4307 / Fax (805) 543-7257

BEATRIZ FOSSE
Central Coast Manager

So. Calif. Location
(909) 599-0931

CLSA Central Coast Chapter

September Meeting Minutes

September 13, 2001 Meeting Held at A.J. Spur's in Templeton

I. Call to Order at 7:25p.m. by Mark Lewis

II. Introductions

III. Approval of May 10, 2001. Motion by Randy Woodjack and seconded by Rochelle Vierra to approve minutes. Motion Carries.

IV. Officer's Reports

A. President's Report by Mark Lewis - Loy Zambo and Jeremy Villegas are newly licensed surveyors from our chapter.

B. Vice President's Report by Rochelle Vierra - No Report

C. Secretary / Treasurer's Report by Craig Yates

General Fund \$7684.30 Education Fund\$3147.80 Legal Fund \$40.00 Historical Fund \$189.51

Trig-Star Fund \$437.06

V. Committee Reports

A. Standing Committees

1. Education Committee - Tom Mastin No Report

2. Membership Committee - Craig Yates We received letter from State CLSA verifying that we have enough corporate members for continuation of our three representatives.

3. Professional Practices Committee - Mark Lewis is preparing letter regarding bringing monumentation to surface on road improvement projects.

B. Special Committees

1. Publications Committee - Bryce Dilger No Report.

2. Trig-Star Committee - Randy Woodjack is turning Trig-Star over to George Marchenko and we will need more volunteers.

3. Workshops/Seminar Committee - Randy Ellison . Linda Richardson stated that the State sponsored CLSA/ALTA workshop previously scheduled for September 14th has been postponed to November 2nd. Linda also will follow-up on getting a chapter sponsored ALTA seminar with Roy Minnick at FATCO, Suggested costs to be \$40 member and \$60 for non-members. Armand Boute is also trying to get a Subdivision Map Act seminar featuring Bob Merrit sometime around April/May.

4. BBQ Committee - Ken Fargen. Craig Yates gave report of \$607 in proceeds from picnic. Costs submitted thus far are \$199. Still waiting for Ken Fargen costs.

5. Nominating Committee - Mark Lewis. Nominations for 2002 were presented by Mark Lewis as follows:

Rochelle Vierra, President

Craig Yates, Vice-President

Joe Bloom, Secretary/Treasurer

Linda Richardson (1 year term remaining), Representative

Randy Woodjack (1 year term remaining), Representative

Randy Ellison (new 2 year term), Representative

Tom Mastin (1 year term remaining), Alternate Representative

Joe Morris (1 year term remaining), Alternate Representative

John Sanders (new 2 year term), Alternate Representative

Motion by Craig Yates and seconded by Linda Richardson to close nominations and accept as submitted. Motion Approved.

6. Christmas Committee - Linda Richardson Yacht Club has been reserved. Details to come. We will be inviting Engineers.

7. By-Laws Committee- Tom Mastin - Motion by Tom Mastin and seconded by Bob Fredericks to approve by-laws changes as presented in parallax. Motion approved.

C. Ad Hoc Committees

1. Scholarship Committee - Bob Fredericks. Motion by Bob Fredericks and seconded by Tom Mastin to increase our current two \$500 scholarships to two \$750 scholarships. Some discussion regarding selection process and if this is ongoing. It was determined that it is ongoing at this amount but can be revisited as needed. Motion approved unanimously.

2. G.I.S. Development Committee - Victor Rasgado - No Report.

3. Historical Records Committee- Dan Manion. mark lewis stated that the Dalide topo is finally done!

4. County Legislative Liaison Committee - Mike Stanton - Mike addressed the bill SB497 and its impacts and urged letters to be written to Governor Davis.

VI. State Board Report - Motion by Robert Reese and seconded by Tom Mastin to direct our representatives to reject the proposed state by-laws amendment as proposed as it pertains to State CLSA membership requirements of pre-1982 Engineers. Motion Carries.

VII. Old Business - John Sanders brought up getting recorded maps on CD, Mike Stanto will be talking with Julie Rodewald.

VIII. New Business - Mike Stanton requested that as part of any seminars our chapter puts on that we make

CLSA Conference 2002

MARCH 24-28

**HARVEYS RESORT & CASINO
LAKE TAHOE, NV
ROOM RATE \$108.00**



**KEYNOTE SPEAKER:
KNUD HERMANSEN**



CALIFORNIA LAND SURVEYORS ASSOCIATION

PHONE 707-578-6016 FAX 707-578-4406

CLSA@CA-SURVEYORS.ORG WWW.CA-SURVEYORS.ORG

REGISTRATION PACKETS WILL BE MAILED IN EARLY JANUARY

On Monday...On Tuesday

On Monday there were people fighting against praying in schools , On Tuesday you would have been hard pressed to find a school where someone was not praying,

On Monday there were people were trying to separate each other by race, sex, color and creed, On Tuesday they were all holding hands,

On Monday we thought that we were secure, On Tuesday we learned better,

On Monday we were talking about heroes as being athletes, On Tuesday we relearned what hero meant,

On Monday people went to work at the Pentagon and world trade centers as usual, On Tuesday they died,

On Monday people were fighting the 10 commandments on government property , On Tuesday the same people all said 'God help us all' while thinking 'Thou shalt not kill' ,

On Monday people argued with their kids about picking up their room , On Tuesday the same people could not get home fast enough to hug their kids,

On Monday people picked up McDonalds for dinner, On Tuesday they stayed home,

On Monday people were upset that their dry cleaning was not ready on time , On Tuesday they were lining up to give blood for the dying ,

On Monday politicians argued about budget surpluses, On Tuesday grief stricken they sang 'God Bless America'

On Monday we worried about the traffic and getting to work late , On Tuesday we worried about a plane crashing into your house or place of business,

On Monday we were irritated that our rebate checks had not arrived, On Tuesday we saw people celebrating people dying in the USA,

On Monday some children had solid families, On Tuesday they were orphans,

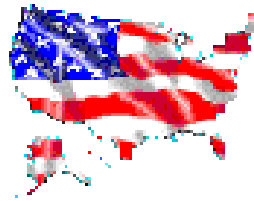
On Monday the president was going to Florida to read to children , On Tuesday he returned to Washington to protect our children,

On Monday we emailed jokes, On Tuesday we did not,

It is sadly ironic how it takes horrific events to put things into perspective, but it has. The lessons learned this week, the things we have taken for granted, the things that have been forgotten or overlooked, hopefully will never be forgotten again.

- On Monday - pray and be thankful
- On Tuesday - pray and be thankful
- On Wednesday - pray and be thankful
- On Thursday - pray and be thankful
- On Friday - pray and be thankful
- On Saturday - pray and be thankful
- On Sunday - pray and be thankful

GOD BLESS AMERICA AND AMERICANS - BE PROUD !!



The CAD-Scan Connection
Architectural/Engineering Services

Linda M. Posner, owner

935 12th Street - Suite B
Paso Robles CA 93446
Phone: (805) 237-9347
FAX: (805) 237-7723

WEB SITE: www.cadscanconnection.com

KEN WILSON LS 5571

WILSON LAND SURVEYS

6715 MORRO ROAD ATASCADERO, CA 805-466-2445 805-466-0812 FAX

BLAKE Land Surveys

250 Industrial Way, Unit C, P.O. Box 869, Guadalupe, CA 95427 Tel: 805-688-2254 Fax: 805-688-2799

Berk Blake

BELSHER & BECKER
ATTORNEYS AT LAW

John W. Belsher, Esq.

412 MARSH STREET SAN LUIS OBISPO, CA 93401 TELEPHONE 805-542-9900 FAX 805-542-9949 E-MAIL: JWBELSHER@aol.com

625-A EAST CHAPEL SANTA MARIA, CA 93454 TELEPHONE 805-349-7929 FAX 805-349-7930

CLSA Central Coast Chapter Officers

- MARK LEWIS
President.....434-3177
 - ROCHELLE VIERRA
Vice-President.....549-3461
 - CRAIG YATES
Secretary/ Treasurer.....238-5725
 - LINDA RICHARDSON
Chapter Rep.....549-8658
 - RANDY ELLISON
Chapter Rep.....543-1794
 - RANDY WOOD JACK
Chapter Rep.....434-1834
 - TOM MASTIN
Alt. Chapter Rep.....544-4011
- Questions, articles, advertisements or items of interest should be sent to:
Parallax
c/ o Bruce Dilger, Vaughan Surveys
1101 Riverside Ave, Paso Robles, CA 93446 Tel. (805) 238-5725x11

TWIN CITIES SURVEYING

SKIP TOUCHON, PLS
LS 4845

P.O. Box 777
Templeton, CA 93465-0777

(805) 434-1834 Fax: (805) 434-3684
email: touchon@calnet.com Fgr: (805) 227-5470

JLWA John L. Wallace & Associates
Civil Engineering • Surveying • Planning

Joe Morris, P.L.S.
Director of Land Surveying

4115 Broad Street, Suite B-5 • San Luis Obispo, CA 93401
Tel (805) 544-4011 • Fax (805) 544-4294

REESE WATERLAND SURVEYING SERVICES

ROBERT J. REESE • LS 6208

1878 PARTRIDGE DRIVE
SAN LUIS OBISPO, CA, 93405

TEL/FAX: 805-545-9375
EMAIL: roreese@rbgrid.net

Sanford & Sons survey

Brian

P.O. Box 2258
Atascadero
California 93423
(805) 466-6759
(805) 466-9830

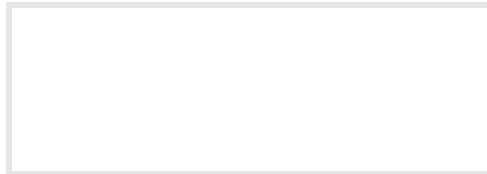
Fargen Surveys, Inc.
Santa Maria

Ken Fargen
LS 4597

2450 Professional Parkway
Suite 120
Santa Maria, CA 93455
(805) 934-5727
FAX (805) 934-3448



Parallax
c/o Bryce Dilger
Vaughan Surveys
1101 Riverside Avenue
Paso Robles, CA
93446



IN THIS ISSUE

2002 CLSA Conference

Newsletter Sponsors

The following show their support for the education activities of the Central Coast Chapter of C.L.S.A. by being a yearly sponsor to Parallax

Vaughan Surveys, Inc.

William R. Dyer, Engineering

Blake Land Surveys

Jensen • Lenger Surveys

MPI Microfilm Service

North Coast Engineering

Garing, Taylor & Associates

John L. Wallace & Associates